



**HORIZONTAL
FORMATION EVALUATION
& GAS ANALYSIS
LOG**
1" = 100'

COUNTY: Any
 FIELD: Open
 LOCATION: _____
 WELL: Well No. 1
 COMPANY: Stratagraph Drilling

COMPANY	Stratagraph Drilling	
WELL	Well No. 1	
FIELD	Open	
COUNTY	Any	
STATE	Texas	
LOCATION	_____	
API SERIAL NO.	_____	_____
SEC	_____	_____
TWP	_____	_____
RANGE	_____	_____
OTHER SERVICES	_____	

SPUD DATE: _____ TOTAL DEPTH: _____ ELEV.: _____

LOGGING STARTED: _____ @ _____ K.B. _____
 LOGGING FINISHED: _____ @ _____ D.F. _____
 _____ @ _____ G.L. _____

BORE HOLE RECORD		CASING RECORD				
HOLE SIZE	FROM	TO	SIZE	WGT.	FROM	TO


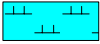















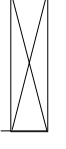
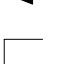




DRILLING CONTRACTOR: _____
 RIG: Rig 1
 Drilling Rig Company

PERSONNEL: _____
 Logge 1 / Logger 2

REMARKS: _____

Disclaimer: STRATAGRAPH, INC. will make every effort to render our services efficiently and accurately, but will not be liable for failure to report or interpret its analysis correctly.

LEGEND

Abbreviations BG Background Gas CB Corebit CG Connection Gas CK Filter Cake CKF Check For Flow CL Salinity ppm CO Circulate Out CR Circulate Returns CT Carbide Test DB Diamond Bit DBG Drilling Background Gas DC Depth correction DCB Diamond Corebit DF Derrick Floor DG Drilling Gas DS Directional Survey DST Drill Stem Test EL Electric Log E.M.A. Equivalent Methane Gas F Filtrates API cc's F/T Flowline Temperature FR Fair FV Funnel Viscosity API sec GCM Gas Cut Mud GCW Gas Cut Water GD Good G&OCM Gas & Oil Cut Mud GL Ground Level GTT Gas Trip Test KB Kelley bushing LAT Log After Trip LAST Log After Short Trip MW Mud Weight in lbs/gal NCB New Bit NB New Corebit NR No Returns PDCB Polycrystalline Diamond Compact Bit PERF Perforated PPM Parts Per Million PR Poor PRT Poor Returns PV Plastic Viscosity RM Mud Resistivity OHM-METER RMC Mud-Cake Resestivity OHM-METER RMF Mud Filtrate Resestivity RPM Revolutions Per Minute RRB Return Bit RT Rotary Table SF Sea Floor SO Show Of Oil SOL Solids % SPP Stand Pipe Pressure STG Short Trip Gas SWG Swab Gas SVG Survey Gas S/T Suction Temperature TB Turbo Drill T.D. Total Depth TCL Trip Chlorides TG Trip Gas TVD Total Vertical Depth WOB Weight On Bit		Lithology Symbols  CLAY  MARL  SILT  LIMESTONE  LIMONITE  BENTONITE  DOLOMITE  ANHYDRITE  CHERT  SALT  COAL  SHALE  SANDSTONE  SAND  CHALK	Other Symbols  CASING SEAT  CORED INTERVAL  NO RECOVERY  SIDEWALL CORE  TEST INTERVAL  WIRELINE TEST  Oil Show  Gas Show TRACE FAIR GOOD
--	--	---	--

NOTE: All Lithological Symbols are as per the Shell Oil Exploration Training Manual, Acknowledged by the American Association of Petroleum Geologists.

Chromatogr a	Descriptions	% Lithology	Gas Value	Oil Value	Measured D e	Slide	ROP

Gamma Ray MWD
API

0 150

Depth

10300 10400 10500 10600 10700 10800 10900 11000 11100

TVD

Vertical Depth
ft

9500 10100

Total Gas
Units

0 400

Depth

METHANE

Percent 5

Ethane

Percent 4

Propane

Percent 1

Iso-Butane

Percent 1

Normal Butane

Percent 1

Calibrate THA/ FID

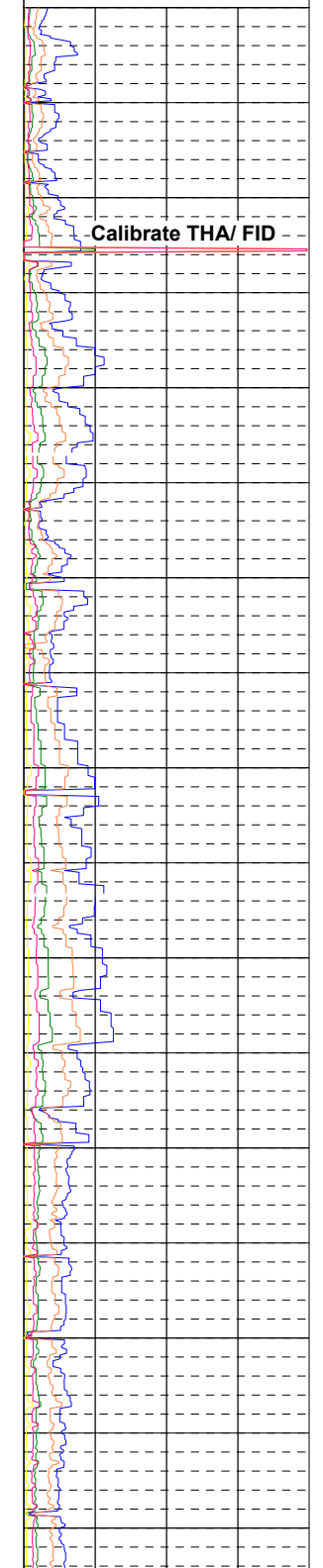
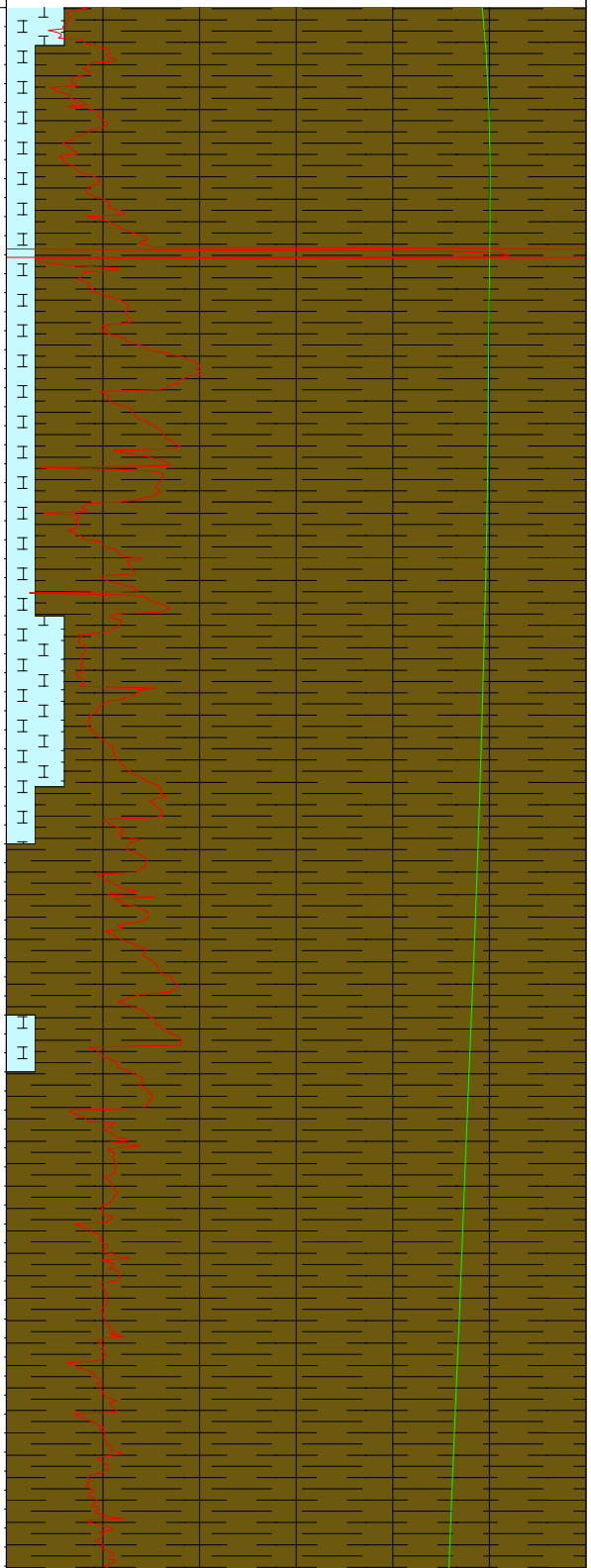
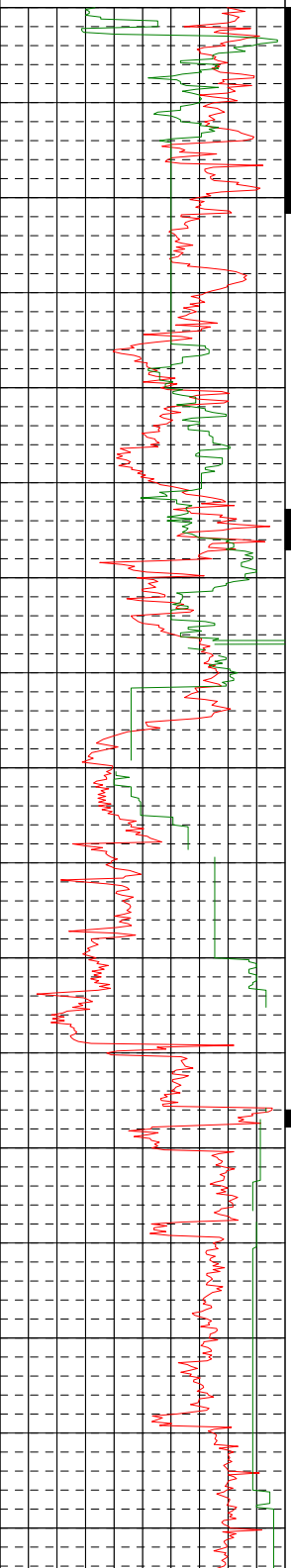
SH: blk-dk gy, frm-hd ip, brit ip, blk, rthy

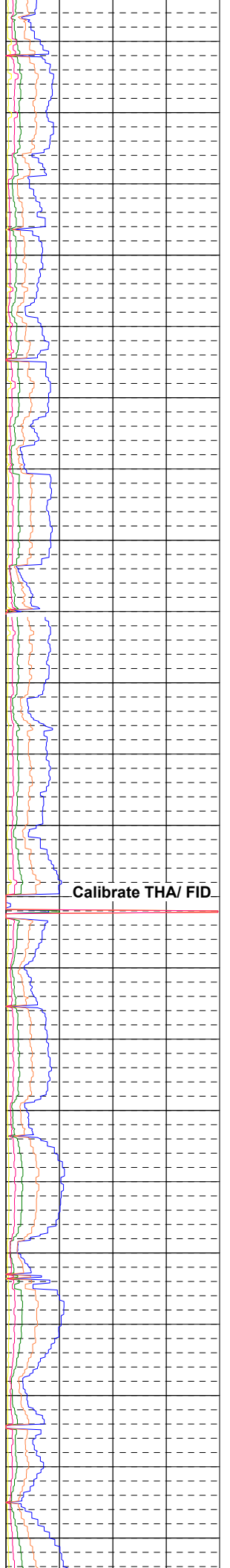
SH: blk-dk gy, frm-hd ip, brit ip, blk,

CHLK: lt brn, khaki, frm, hd, brit ip, blk stri, blk, intl, tr free calc.

SH: dk gry, blk, frm-hd ip, brit ip, blk,

SH: dk gry, frm-hd ip, blk, dull, tr Calc





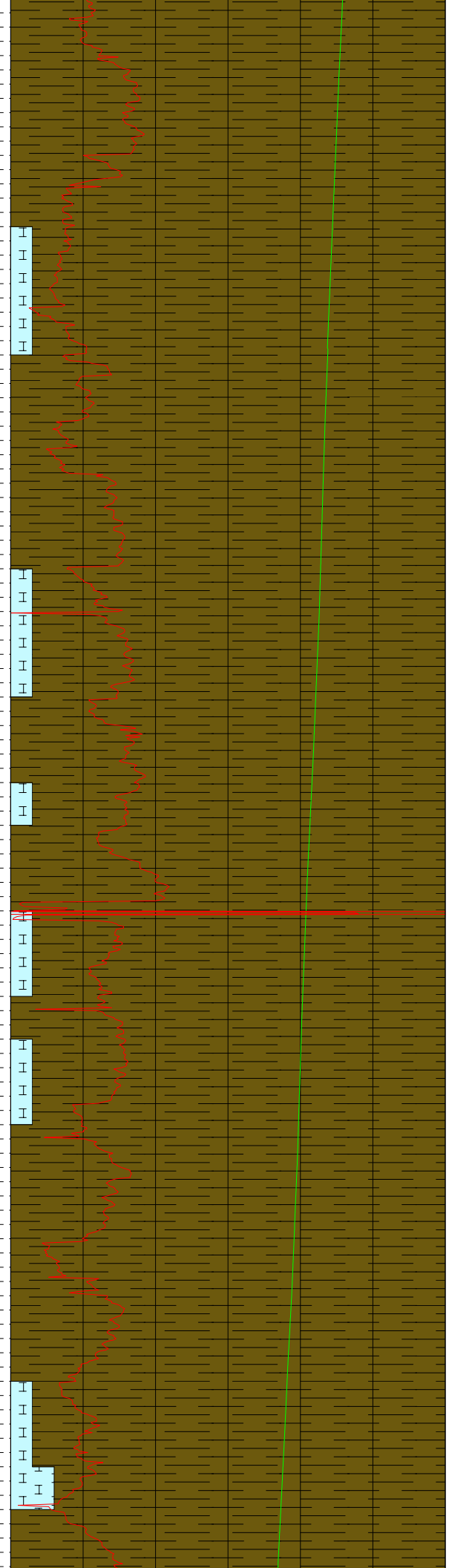
SH: dk gry, blk, frm-
hd ip, britt ip, blk,

SH: dk brn-blk, frm-
hd, britt ip, pred blk,
rthy

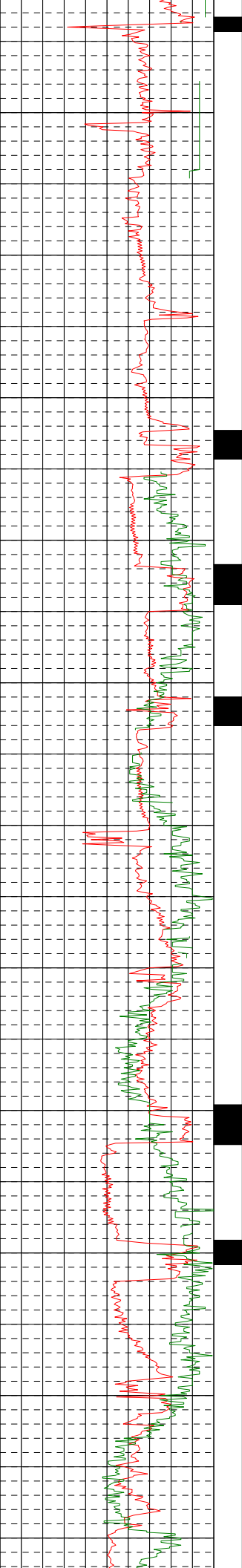
SH: dk brn-blk, frm-
hd, britt ip, blk, rthy

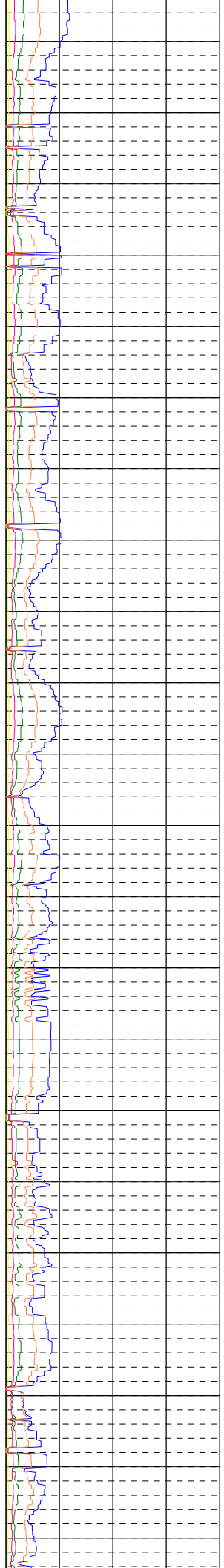
SH: dk gry, frm-hd ip,
britt ip, blk, silky, wxy

SH: dk gry-blk, frm-
hd, britt ip, blk, silky



11200 11300 11400 11500 11600 11700 11800 11900 12000 12100 12200





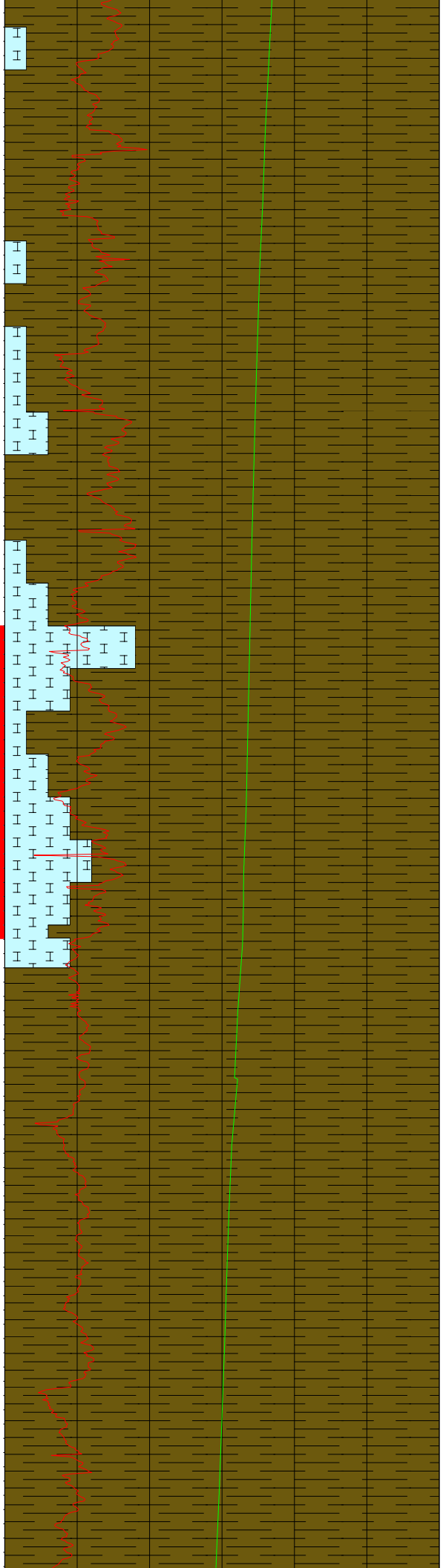
SH: dk gry-blk, frm-
hd, britt ip, blk y, blk y,
incl ip

CHLK: brn, khaki, frm,
hd, brit ip, blk stri, blk y,
flky ip, micxl, intl.

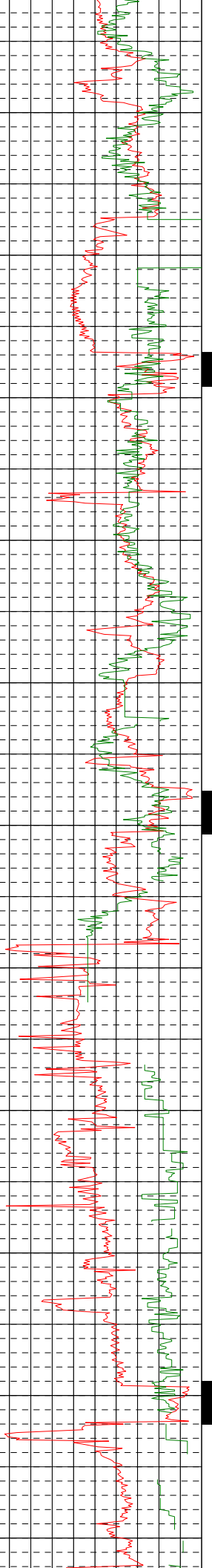
CHLK: lt brn, khaki, frm, hd, brit ip, blk
stri, blk y, flky ip, micxl, intl, tr free calc,
15% dk gy mod frm shale, trc dll yllw
fluor

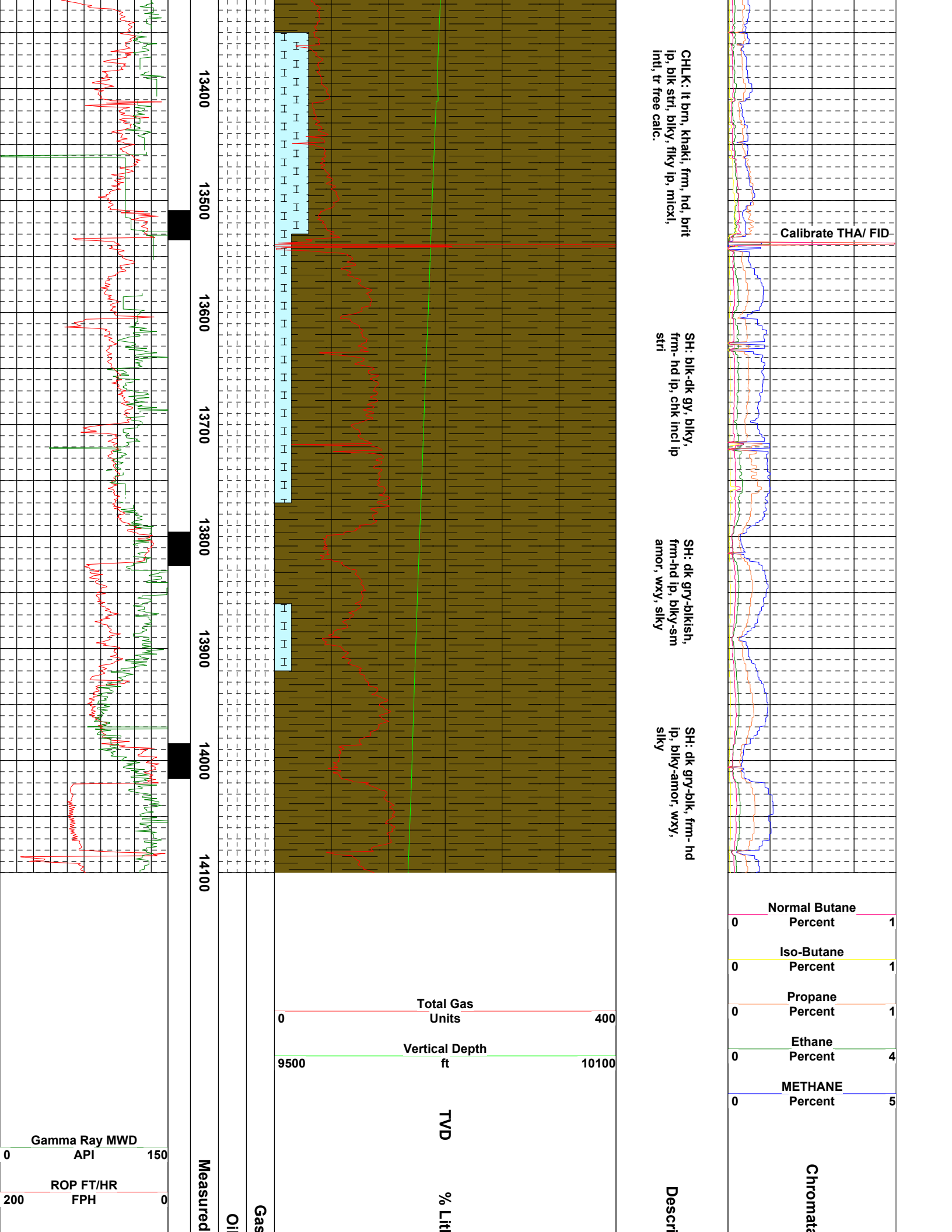
SH: blk-dk gy, blk y,
frm- hd, wxy, silky

SH: blk-dk gy, blk y,
frm- hd, wxy, silky



12300 12400 12500 12600 12700 12800 12900 13000 13100 13200 13300





CHLK: lt brn, khaki, frm, hd, brit
 ip, blk stri, blk y, flky ip, micxl,
 intl, tr free calc.

SH: blk-dk gy, blk y,
 frm- hd ip, chk incl ip
 stri

SH: dk gry-blk ish,
 frm-hd ip, blk y-sm
 amor, wxy, slky

SH: dk gry-blk, frm- hd
 ip, blk y-amor, wxy,
 slky

Calibrate THA/ FID

0	Normal Butane Percent	1
0	Iso-Butane Percent	1
0	Propane Percent	1
0	Ethane Percent	4
0	METHANE Percent	5

0	Total Gas Units	400
9500	Vertical Depth ft	10100

TVD

% Lith

Measured

Oil

Gas

Gamma Ray MWD
API

ROP FT/HR
FPH

Chromatogram

Descript

13400 13500 13600 13700 13800 13900 14000 14100

